



McGuffey School District Return to School Draft Plan as of 7-9-2020

LEARNING
ENVIRONMENT

SAFETY

FAMILY
ENGAGEMENT

TRANSPORTATION, FOOD,
AND OPERATIONS

EXTRACURRICULAR
ACTIVITIES

CURRICULUM AND
INSTRUCTION

SOCIAL EMOTIONAL
LEARNING AND SUPPORTS

PA Department of Education: Reopening Guidance

Centered on formulating multiple strategies to reduce exposure in schools:

- Providing top quality education
- Physical (Social) Distancing
- Wearing Masks
- Ventilation
- Cleaning & Sanitation
- Screening

Considerations for Reopening Schools in Pennsylvania

A Pennsylvania-specific research report prepared in partnership with the Regional Educational Laboratory (REL) Mid-Atlantic and Mathematica, one of the nation's foremost social policy research firms.

Main Components

Data and Research	Stakeholder Feedback	Predictive Modeling
The most recent and rigorous research on COVID-19, early evidence from international school reopenings, and estimations of educational and other losses from long-term school closures.	Formal interviews with public health experts, education organization leaders, school and districts administrators, teachers, parents, state government officials, and others.	Cutting edge, predictive modeling of COVID-19 disease transmission to anticipate differences in transmission associated with different approaches to re-opening schools.

Key Takeaways

- 1 Work collaboratively to address and resolve pupil transportation barriers.
- 2 Plan to offer some amount of in-person education for all students.
- 3 Focus limited resources on highest-leverage public health activities.

Next Steps

Schools can utilize the data and research in this report to inform:

- development of supports for student and staff wellness
- preparations for resuming in-person teaching and learning
- decision-making around the creation of Health and Safety Plans

Pennsylvania Department of Education | www.education.pa.gov | PA-ContinuityOfEd@pa.gov



LEARNING ENVIRONMENT OPTIONS



Red Phase: Schools remain closed for in-person instruction and all instruction must be provided via remote learning, whether using digital or non-digital platforms. Provisions for student services such as school meal programs should continue. Large gatherings are prohibited.

The Yellow Phase and **Green Phase:** Schools may provide in-person instruction after developing a written Health and Safety Plan, to be approved by the local governing body (e.g. board of directors/trustees) and posted on the school entity's publicly available website.

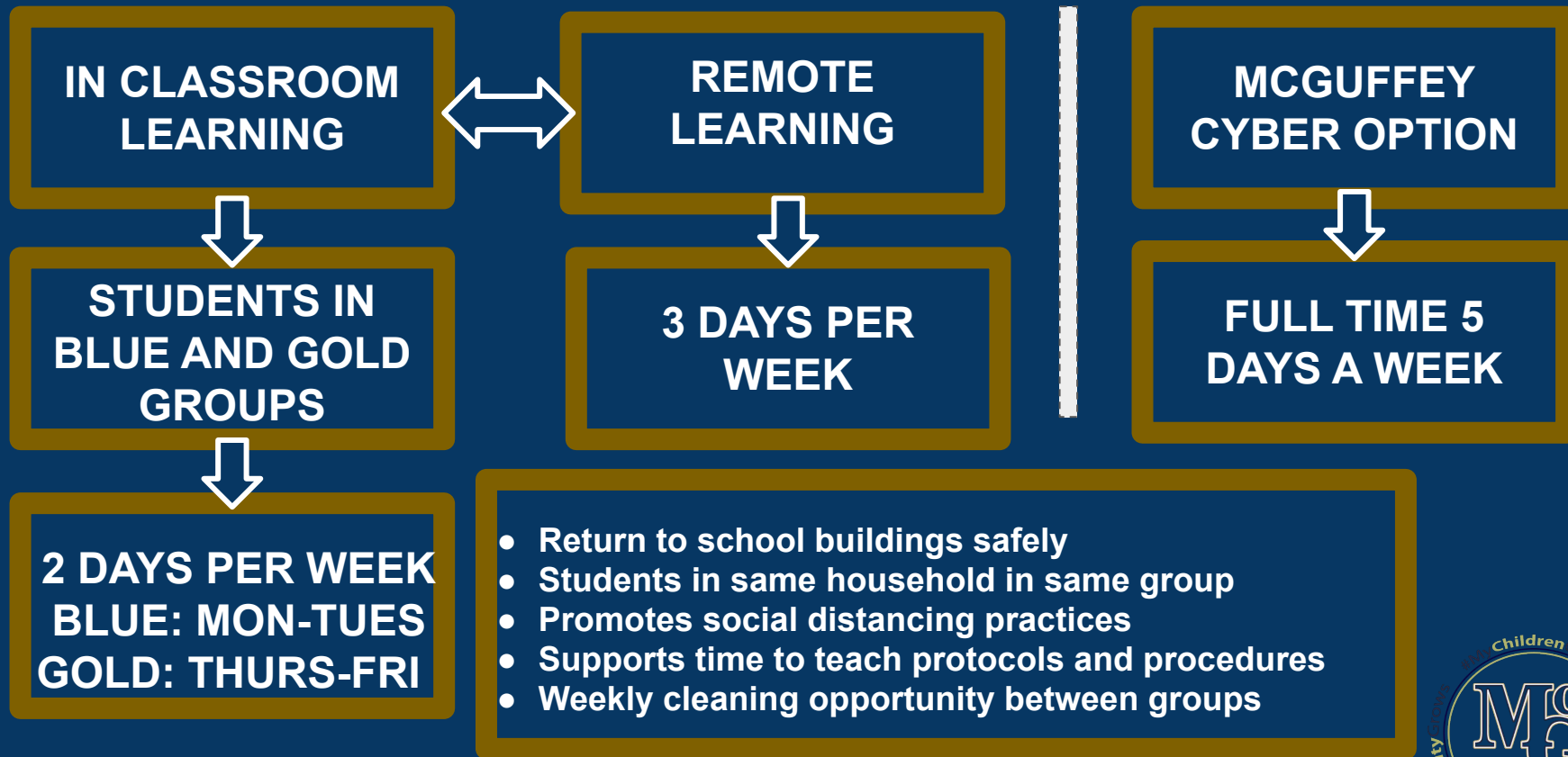


PA Department of Education: Programming

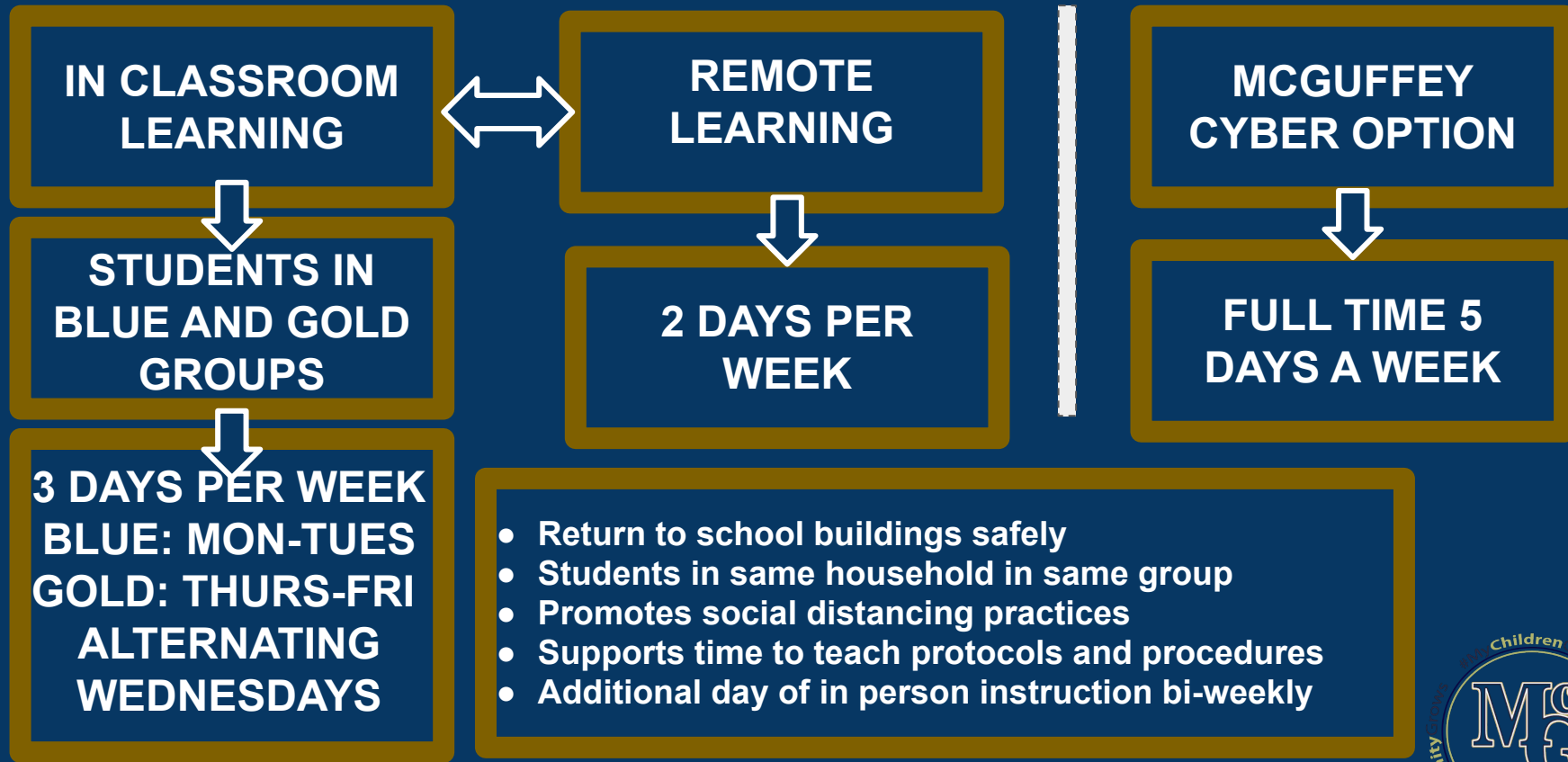
Whenever an emergency shall arise which the board of school directors of any school district in the performance of its duties could not during the prescribed length of school days, number of days per week, anticipate or foresee, and which emergency shall result in any such school district being unable to provide for the attendance of all pupils or usual hours of classes, it shall be found as a fact by the school directors of any school district and so recorded on the minutes of a regular or special meeting of such board and certified to the Superintendent of Public Instruction, and such board of school directors, subject to the approval of the Superintendent of Public Instruction, shall have power to put into operation in such school district any one or more of the temporary provisions hereinafter provided for, but in no event shall such temporary provisions remain in effect for a period of more than four years after they are first put into effect.



Option A



Option B



If we are in Red Phase or have a confirmed case:

**IN CLASSROOM
LEARNING**

**REMOTE
LEARNING**

**MCGUFFEY
CYBER OPTION**

**ALL STUDENTS AND TEACHERS SHIFT TO
REMOTE LEARNING FOR DURATION OF
RED PHASE DESIGNATION OR FOR A
CONFIRMED CASE UNTIL WE ARE GIVEN
CLEARANCE TO REOPEN**

**STUDENTS
CONTINUE CYBER
LEARNING**

Concerns regarding full reopening of school.

- Social distancing reduced to 3 feet or less during school day and on district transportation
- Would not have 6 feet distancing for mask wearing breaks
- Additional staffing and classroom spaces would be required to maintain 6 feet social distancing
- Required changes to arrival, dismissal, and staff reporting times
- Increased likelihood of exposure or a confirmed case



SAFETY



Safety

SOCIAL DISTANCING



- Practice social distancing of 6 feet for students and staff.
- Limit gatherings of large groups
- Seat students facing same direction
- Clearly mark student directional pathways and spacing designations on floors
- Stagger transitions of students and staff in buildings
- Increase transition times between instructional periods.
- Utilize outdoors for physical activity and stagger locker room usage

CLASSROOM ENVIRONMENT



- Limit the sharing of physical materials and resources
- Clean lab equipment, physical education equipment, and shop machines after student use
- Shared materials and resources will be quarantined or disinfected before next student use
- Distribution of hand sanitizer stations throughout every classroom, office, and common space
- Post appropriate health and safety signage throughout building
- Prioritize the use of digital technology and instructional materials for learning.
- Clearly label student materials to limit exposure
- Educate students and staff about threats to health and safety and building procedures.

FACE COVERINGS & MASKS



- Required for all students and staff
- Apply specific exemptions to mask usage
- Follow ongoing guidance from the Pennsylvania Department of Health

PA Department of Health Mandate: Face Coverings FAQ

PDE Order Requiring Face Coverings 7.6.20

Does the Order of the Secretary of the PA Department of Health Requiring Universal Face Coverings apply to children and adults while in schools?

- Yes, this order applies to all individuals while in school entities, including public K-12 schools, brick and mortar and cyber charter schools, private and parochial schools, career and technical centers (CTCs), intermediate units (IUs).
- For the safety of students, staff and families, and to avoid community spread of COVID-19, students and staff are considered to be members of the public who are congregating in indoor locations. As such, they are required to adhere to this order.
- This order remains in effect until further notice.

Under what circumstances are students permitted to remove their face coverings (e.g. masks and face shields)?

- Schools may allow students to remove their face coverings when students are:
 - a. Eating or drinking when spaced six feet apart.
 - b. Seated at desks or assigned work spaces at least six feet apart; or engaged in any activity at least six feet apart.



PA Department of Health Mandates: Face Coverings FAQ continued

What type of face covering complies with this order?

- The Order requires individuals to wear a "face covering." "Face covering" means a covering of the nose and mouth that is secured to the head with ties, straps, or loops over the ears or is wrapped around the lower face. A "face covering" can be made of a variety of synthetic or natural fabrics, including cotton, silk, or linen, and, for the purposes of the order, can include a plastic face shield that covers the nose and mouth. "Face coverings" may be factory-made, sewn by hand, or improvised from household items, including but not limited to, scarves, bandanas, t-shirts, sweatshirts, or towels. While procedural and surgical masks intended for health care providers and first responders, such as N95 respirators, would meet these requirements, these specialized masks should be reserved for appropriate occupational and health care settings.

Do students with disabilities or medical conditions need to wear face coverings?

- Any student who cannot wear a mask or face shield due to a medical condition, including those with respiratory issues that impede breathing, a mental health condition, or disability, and students who would be unable to remove a mask without assistance are not required to wear face coverings. Individuals who are communicating or seeking to communicate with someone who is hearing impaired or who has another disability, where the ability to see the mouth is essential to communication, are not required to wear a mask; however, individuals should consider using another type of face covering such as a plastic face shield.

Must an individual provide evidence that they qualify for an exemption to the order?

- No, per the order, students are not required to show documentation that an exception applies.



PA Department of Health Travel Information

If you have traveled, or plan to travel, to an area where there are high amounts of COVID-19 cases, it is recommended that you stay at home for 14 days upon return to Pennsylvania.

If you travel to the following states, you will need to quarantine for 14 days upon return:

Alabama, Arizona, Arkansas, California, Florida, Georgia, Idaho, Louisiana, Mississippi, Nevada, North Carolina, South Carolina, Tennessee, Texas, and
Utah



TRANSPORTATION, FOODS, AND OPERATIONS



Operations

SCREENING AND PROTOCOLS



- Self health checks
- Basic questionnaire
- Temperature checks
- Isolation Rooms
- Limit non-essential visitors and meetings
- Trainings for staff, students, and visitors
- Follow travel restriction guidelines

CLEANING AND SANITIZING



- EPA registered products
- Emphasize high touch areas
- Touch free restroom cleaning
- Supplies made available for staff

PHYSICAL PLANT



- Increase air circulation
- Open windows and doors when feasible
- Increase outdoor air damper set points
- Touch free water stations only
- Install signage
- Desks same direction
- Use of outdoor and large group spaces

USE OF FACILITIES



- **Red/Yellow** - No use by outside groups
- **Green** - Limited use by outside groups

Food Services

DISTRIBUTION OF FOOD



- Lunch lines set up for social distancing
- Directional markings for one way flow
- Pin number provided through no touch means such as student lookup or bar code reader
- Hand hygiene prior to lunch
- School distributed meals are in line served items or pre-packaged
- No buffet style delivery

CONSUMPTION OF FOOD



- Seating set up for social distancing
- Masks worn but removed while seated and eating
- Hand hygiene after done eating
- Meals brought from home should be all disposable items for yellow (recommended but not required for green)

Transportation

BOARDING / EXITING OF BUSES



- Reduced capacity of those riding buses each day
- Hand sanitizer for drivers and students
- Protocols developed for boarding, loading, unloading, etc.

TRANSPORT TO AND FROM SCHOOL



- Masks required for drivers and students
- Spaced seating as much as possible and practical

OTHER SAFEGUARDS



- Clean and disinfect frequently touched surfaces on the bus at least daily

EXTRACURRICULAR ACTIVITIES



Extracurricular Activities

- [McGuffey Extra Curricular Return Plan Presentation](#)
- [McGuffey Extra Curricular Return Plan](#)
- [McGuffey Electronic Extra Curricular Student Waiver form](#)
- [McGuffey Electronic Extra Curricular Coach/Sponsor Waiver Form](#)



CURRICULUM AND INSTRUCTION



Curriculum and Instruction

HYBRID LEARNING



- Professional development and resources for staff and families to implement remote learning
- Utilize Google Classroom or equivalent option for remote learning opportunities

TECHNOLOGY



- Expand 1:1 implementation
- Researching Jet Pack options for students without internet
- Researching options for providing synchronous and asynchronous instruction
- Continue partnerships and professional development for technology

FULL CYBER LEARNING



- Exploring partnership with IU1 Fusion cyber program or equivalent option
- Investigating options for staff professional development for McGuffey staff to deliver cyber learning

Curriculum and Instruction

- **Follow-up items for the adopted model(s) from C&I subcommittee:**
 - Attendance policies
 - Assessments/grading practices
 - Managing transitions between the learning environment options
 - Google Classroom trainings for students, staff, and families
 - Training and coaching in use of digital tools and programs
 - Gap analysis across the district in relation to missed instruction in the spring, and in relation to the expected PA Core Standards for the coming school year.
 - Reviewing the *National Standards for Quality Online Teaching*
 - Visiting a “teams” model for communications
 - Digital components of our current physical materials (licenses needed, etc.)



FAMILY ENGAGEMENT

McGuffey School District Return To School Plan - Fall 2020



Family Engagement

ADDITIONAL FAMILY ENGAGEMENT INITIATIVES



- Hosting educational workshops
- Writing a handbook for the fall, including procedures and resources
- Creating videos on how to use the Google platform
- Invited families to join subcommittees
- Focused meetings for community feedback
- Special Services Virtual Office Hours
- Writing a Communication Plan to ensure consistent, timely feedback is being addressed district-wide and at building levels

PARENT SURVEY

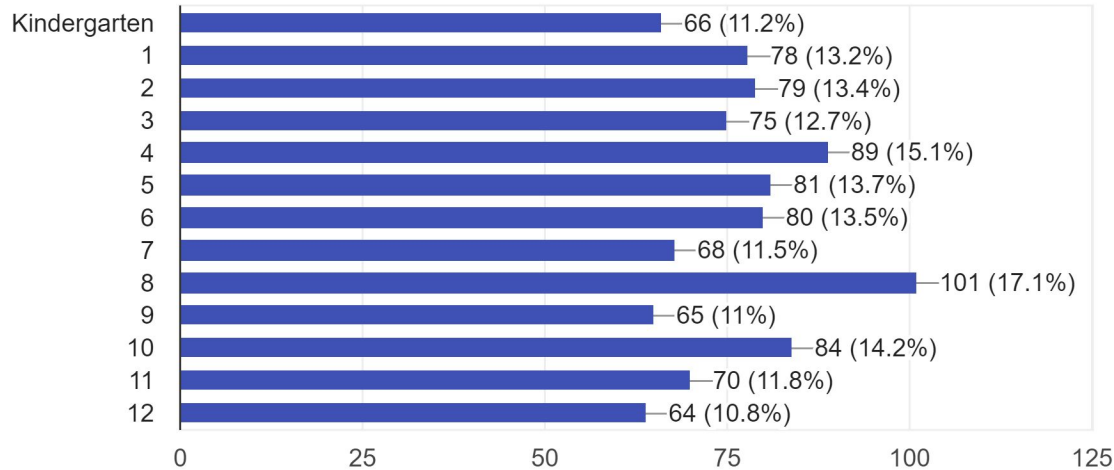


- Administered in June
- 591 parent responses
- Parent perceptions of various elements of returning to school
- Summary of results on following slides

Parent Return to School Survey

What grade level/s will your child/children be in for the 2020-2021 school year? (Check all that apply.)

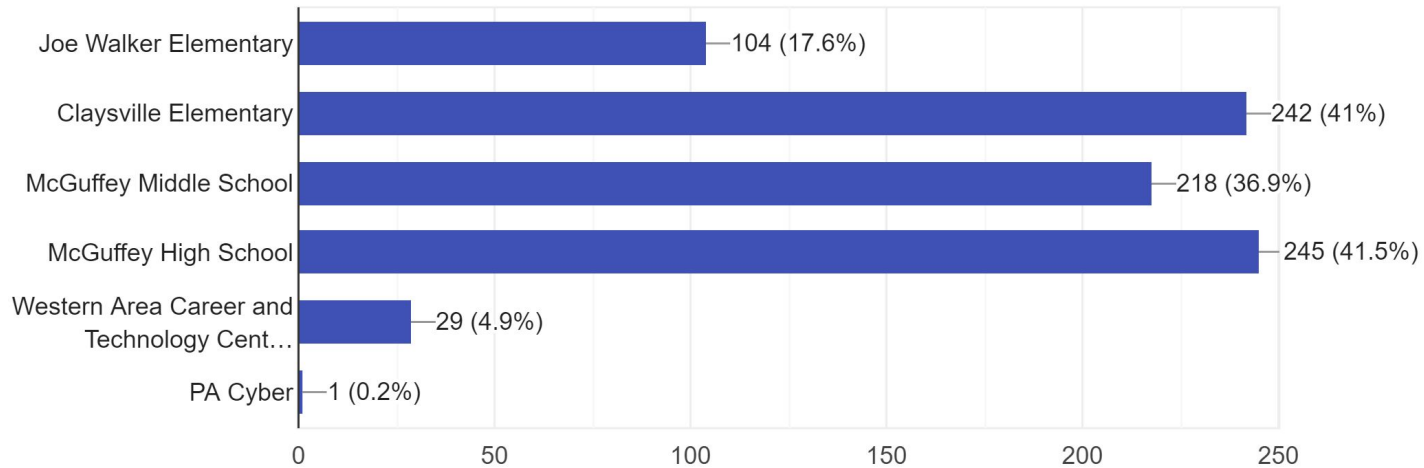
591 responses



Parent Return to School Survey

What building/s will your child/children attend in the 2020-2021 school year?

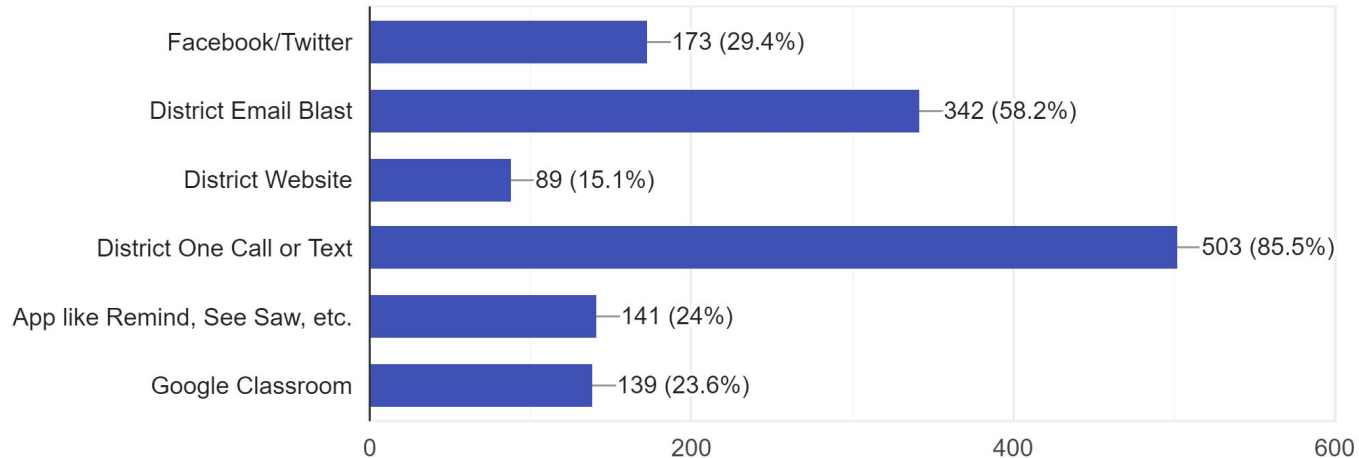
590 responses



Parent Return to School Survey

What methods of communication between the school and home work best for you? Choose all that apply.

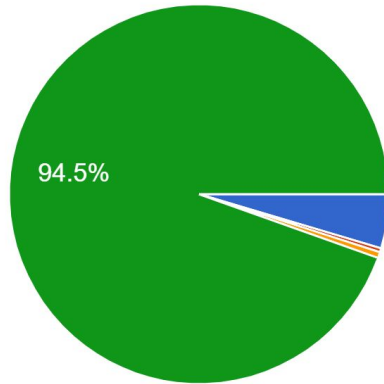
588 responses



Parent Return to School Survey

Everyone has been impacted by COVID-19 in some way. What information would be valuable to you given the level of impact your family experienced?

587 responses

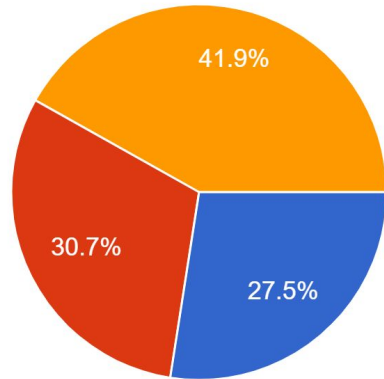


- I need financial recovery resources.
- I need physical health resources.
- I need mental health resources.
- I do not need any resources at this time.

Parent Return to School Survey

If current social distancing guidelines remain, it will be very difficult to transport all current bus riders in a timely manner. Please choose the best answer for your child/children.

590 responses

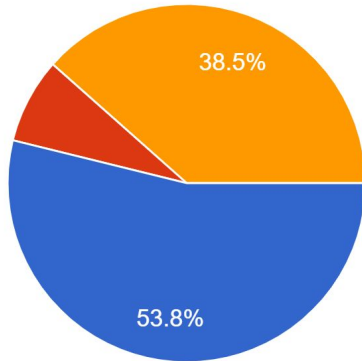


- My children do not normally ride the bus. I will provide transportation to school next year.
- My children normally ride the bus, but I could provide transportation to school next year.
- I cannot provide transportation for my children and would need them to ride the bus to school next year.

Parent Return to School Survey

Issues with the pandemic and social distancing may require us to educate in an alternative format. It is possible that we will need to adopt a hybrid a... following would you prefer for your child/children?

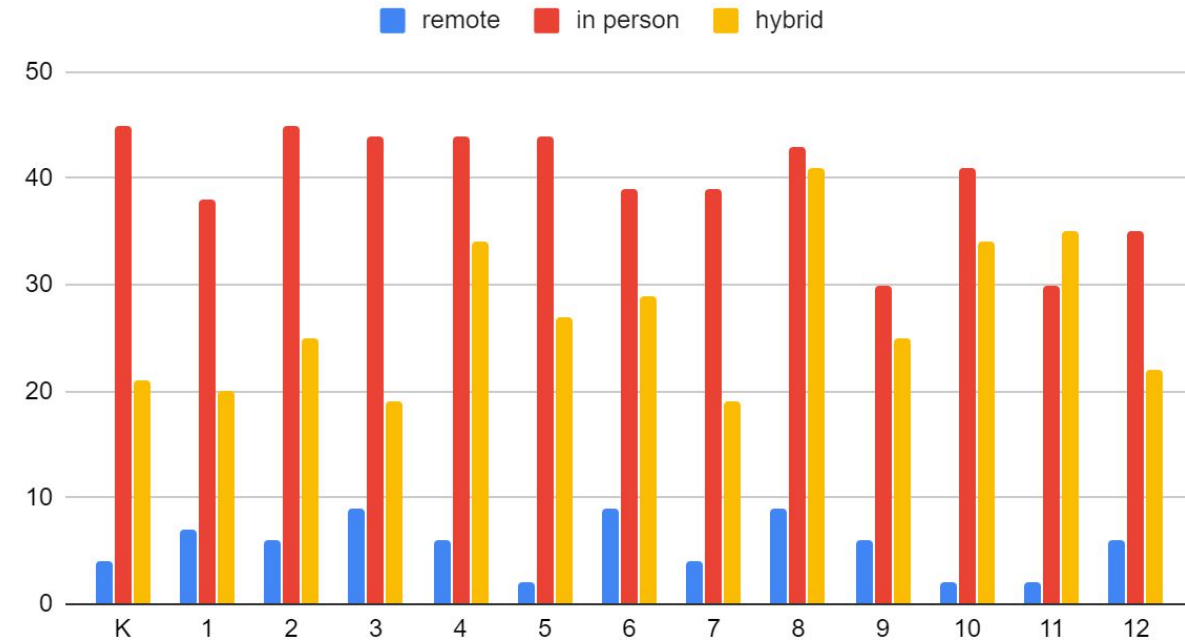
572 responses



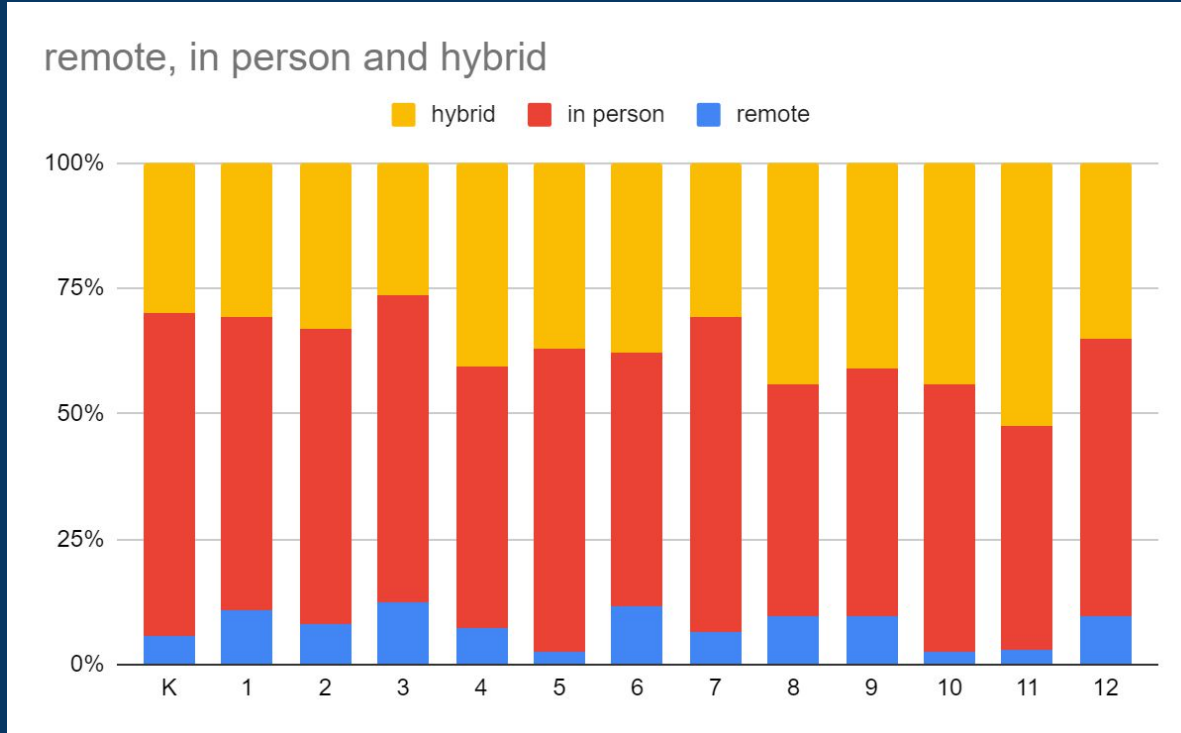
- Return to all face-to-face instruction (even if masks are required) with remote learning offered only to those parents who choose for their child/children not to return to school.
- Return to all distance learning for all children (remote learning).
- Return with some form of hybrid for all children (part face-to-face, part remote learning).

Parent Return to School Survey

remote, in person and hybrid



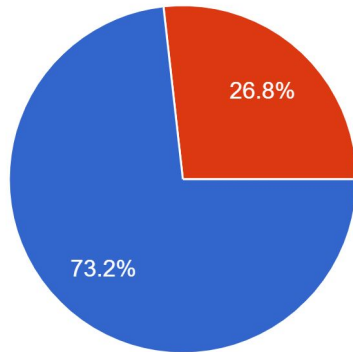
Parent Return to School Survey



Parent Return to School Survey

If the district used a hybrid schedule, which of the following most accurately reflects your situation?

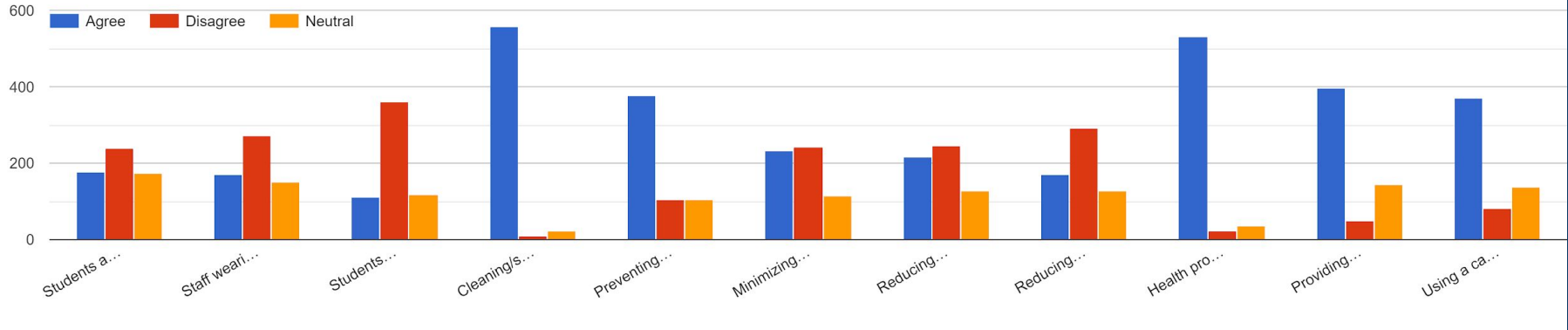
575 responses



- We would not need childcare or we would be able to secure childcare during remote learning.
- This would be difficult because of childcare concerns.

Parent Return to School Survey

Please rate your feelings on each safeguard/issue as Agree, Disagree, or Neutral



6 feet
cashless

staff- masks

students- masks

cleaning

limit sharing

Materials

min use

common spaces

large groups

assemblies

field trips

protocols for sick

resources

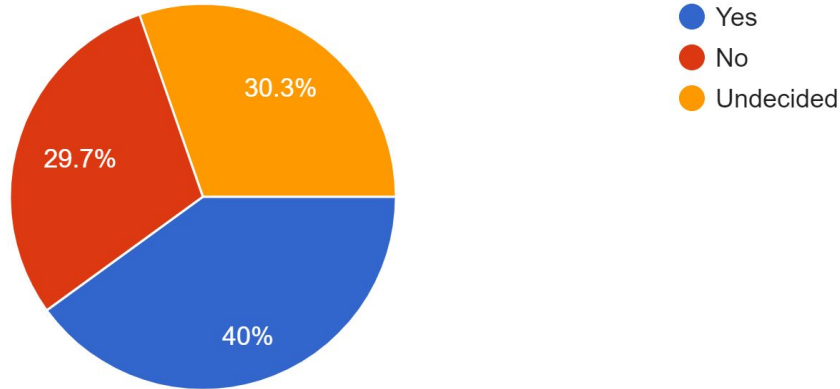
mental health

system



Parent Return to School Survey

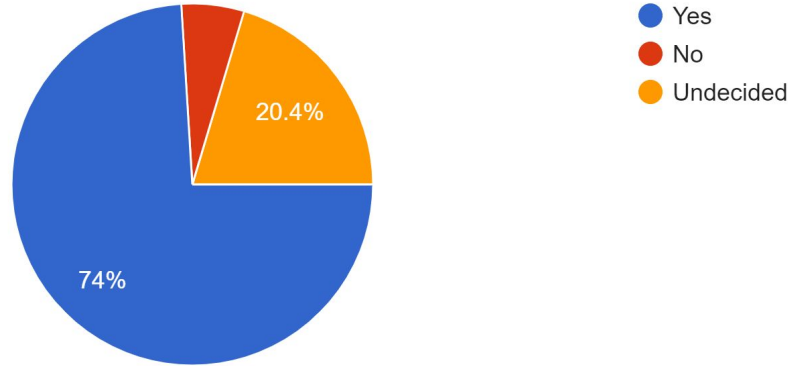
If safety masks are required for students to wear, will you consider sending your child to school?
590 responses



Parent Return to School Survey

If safety masks are NOT required for students to wear, will you consider sending your child to school?

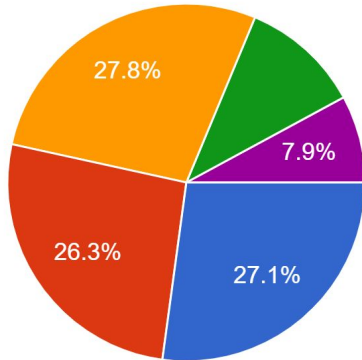
589 responses



Parent Return to School Survey

What is your comfort level with students returning to school in person in August if the guidelines from the state permit and are followed?

582 responses

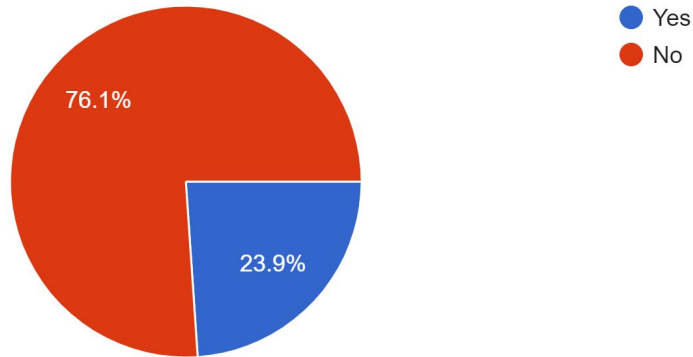


- Extremely comfortable
- Very comfortable
- Moderately comfortable
- Slightly comfortable
- Not at all comfortable

Parent Return to School Survey

McGuffey SD values and welcomes input from our families, would you be interested in joining the Return to School Committee?

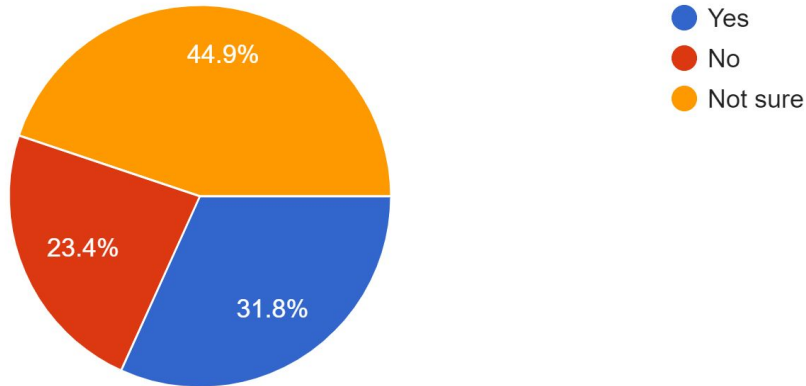
577 responses



Parent Return to School Survey

If you are not comfortable with your child/children returning to a traditional or hybrid setting in the fall, would you enroll your child in a McGuffey Sp...ored Cyber School program, if one were available?

573 responses



Parent Return to School Survey

Themes from comments-

- Special Education
- Fall outbreak
- Lack of Internet
- Sports/extra curriculars
- Masks- those who are against masks have strong opinions
- Western Area
- Students needing socialization
- Distance learning needs to include teachers interacting directly with students on video, grading, and attendance



SOCIAL EMOTIONAL LEARNING AND SUPPORTS



Social Emotional Learning and Supports

MEETING THE NEEDS OF STUDENTS



- Tier 1 supports upon return
- Facilitate class meetings
- Classroom lessons
- SAP, Tier 2 and 3 as needed
- Counselor supports
- Guidance groups
- Additional PBIS matrixes
- Tentative wellness event
- One page help documents
- Welcome back banners
- Videos of what is different
- Handbook resource guide

MEETING THE NEEDS OF COMMUNITY



- Communication to our families of resources and supports that are available
- Family handbook
- quick help one page documents
- Tentative welcome back wellness event
- Thank you banner or video messages
- Resource videos and social media postings

MEETING THE NEEDS OF STAFF MEMBERS



- Staff professional development:
 - trauma informed care
 - identify struggling students
 - use of SAP and Tier 2 and 3
 - Fostering feeling of safety
- Employee Assistance Program (EAP) offered to all staff

QUESTIONS?

